

Sports & Leisure



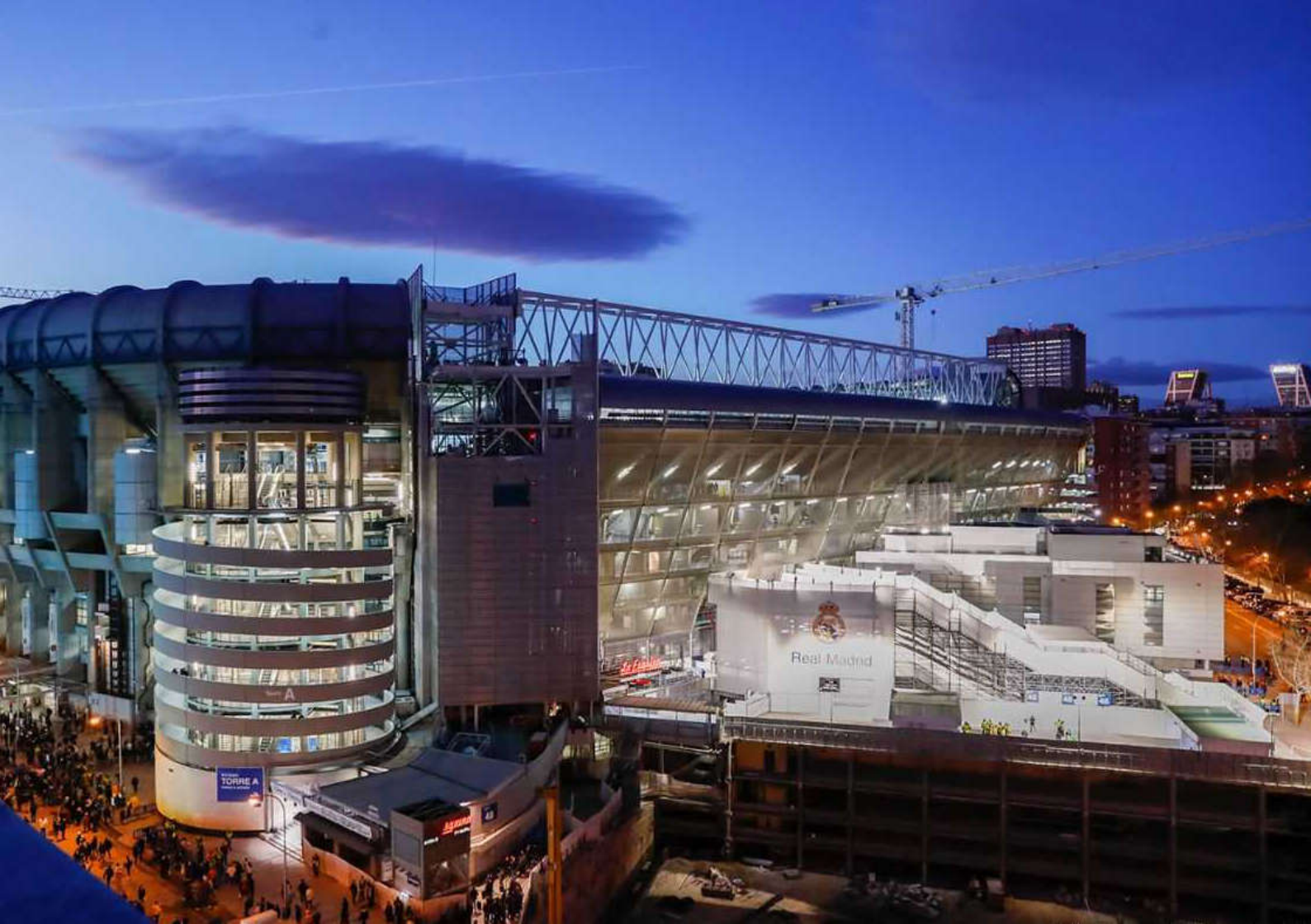
**Sel Environmental**  
Real Innovation.

case studies.

## Santiago Bernabéu Stadium, Real Madrid Football Club



Installation of a high performance pitch drainage layer, including welded membrane lining within each of the trays that form the new retractable pitch in Real Madrid's stadium redevelopment.



## Etihad Stadium, Manchester City Football Club



SELSports designed and installed a stormwater management system aka “the circulate system” underneath the new pitch at Manchester City Football Club. The system delivered high performance drainage with harvesting for irrigation while improving capacity in the local sewer network. The system incorporated CwC remote monitoring and control.



MILANS  
WE ARE CITY  
SUPER CITY  
MILANS

Gianni Scuderi  
10

CHAMPIONS  
2020/21

## Anfield Stadium, Liverpool Football Club



SELSports installed a specialist water high performance drainage and air blanket system underneath Liverpool Football Club's new Premier League pitch.



## New White Hart Lane, Tottenham Hotspur Football Club



SELSports installed the high performance drainage system utilised in Tottenham Hotspurs worlds first retractable Premier League football pitch. Works included installation of the NFL pitch below as well.





## Villa Park Stadium, Aston Villa Football Club



SELSports installed a seamless synthetic grass pitch surround, providing a hard wearing yet stunning area to facilitate both football and rugby functions.



## Temporary ProLeague Hockey Event, Harlequins Twickenham Stoop



The first temporary venue to host the  
FIH Pro League double header finals.  
The Largest hockey attendance in the  
UK since the 2012 Olympics.



## Britannia Leisure Centre, Hackney, London



SELSports were appointed to construct rooftop sports facilities, comprising 2Nr Football Pitches and 2Nr Multi-Use-Games-Areas.



## White Collar Factory, Offices, Old Street, London

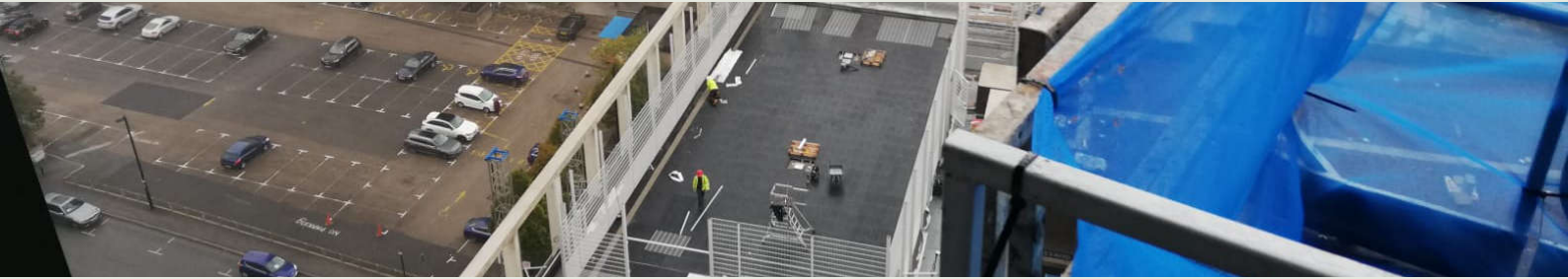


Londons highest running track. A two lane polymeric EPDM running track around the perimeter of the 16th floor of the White Collar Factory in London.





## Moda Angel Gardens, Apartments, Manchester



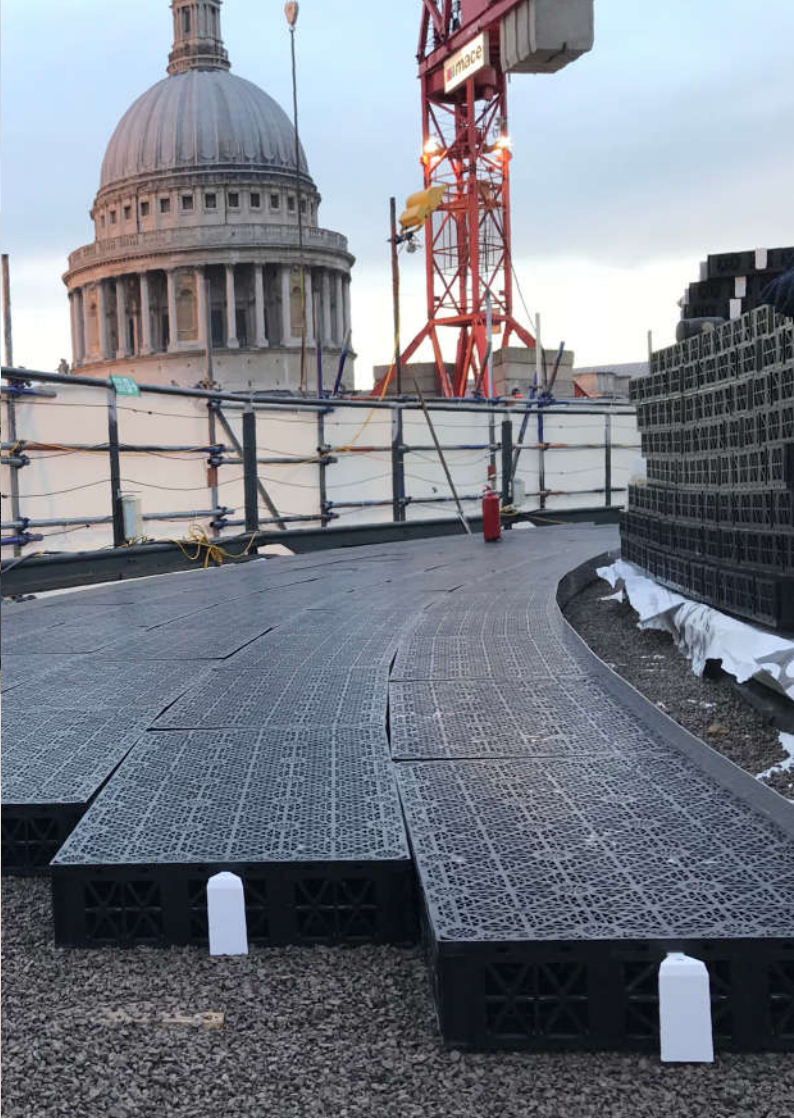
A rooftop multi use games area  
for residents of the  
Moda Angel Gardens apartments  
in Manchester city centre.



## Bracken House, Offices, Central London



A two lane rooftop running track in the shadow of St Paul's Cathedral, offering breathtaking views of the London skyline.



## Green School for Boys, London



SELSports were appointed to construct a rooftop sports facility, complete with fencing and sports equipment for the new Green School for Boys at Isleworth, London



## Ark Blake Academy, Croydon

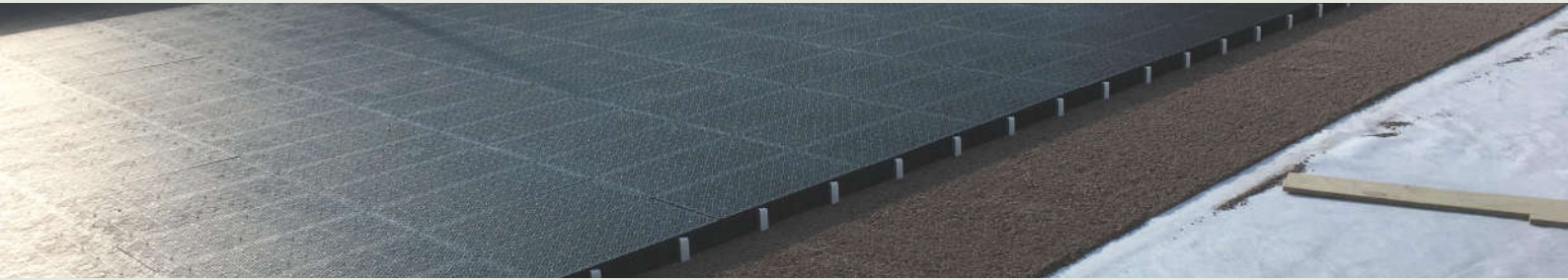


SELSports were appointed to construct a rooftop sports pitch, complete with fencing and sports equipment complete with 5-a-side football line markings.





## Stephen Perse Foundation, Cambridge



Cambridge's first rooftop multi-use games area. A sand dressed synthetic turf rooftop MUGA, complete with netball and 5-a-side football line markings.



## Boroughmuir High School, Edinburgh



A 3G synthetic grass rooftop sports pitch, complete with edge details and rubber tiled areas, designed and installed by SELSports.



## Battersea Park High School, London



A sand dressed synthetic grass rooftop MUGA, including fencing and roof netting.



## Putney Common High School, London



A Resin Bound Gravel playground on a rooftop. SELSports were appointed to install a hard-surfaced MUGA and two terraced areas on a rooftop in Putney, circa 1500m<sup>2</sup> total.





## The Hive Wirral Youth Zone, Birkenhead



A synthetic turf rooftop 5-a-side football pitch designed and installed by SELSports, as part of the Onside Youth Zone scheme.



## Hide Out Youth Zone 3G Pitch, Manchester



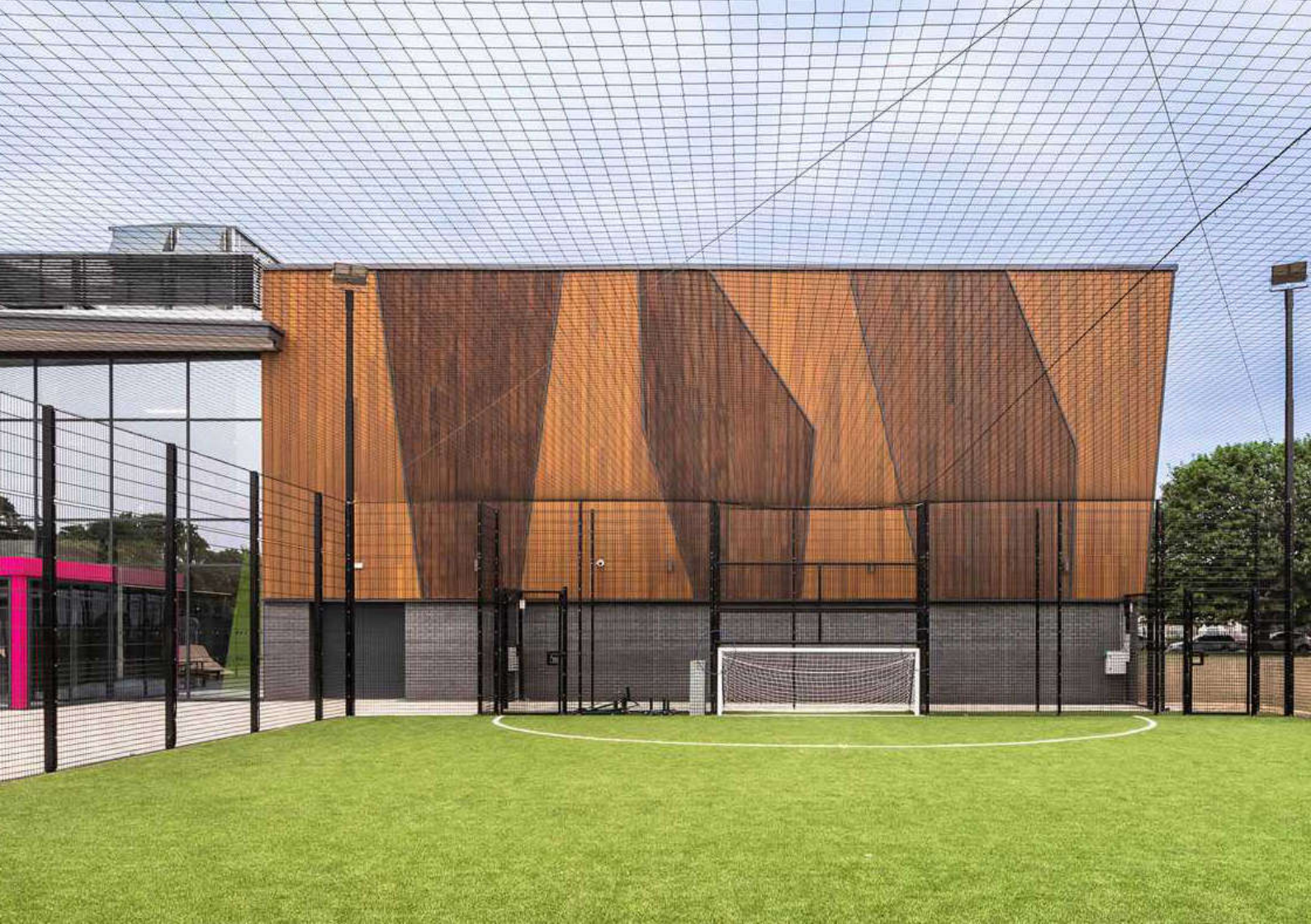
Design, supply, deliver & installation of a new ground level MUGA Pitch on a fast draining void former layer including groundworks and fencing.

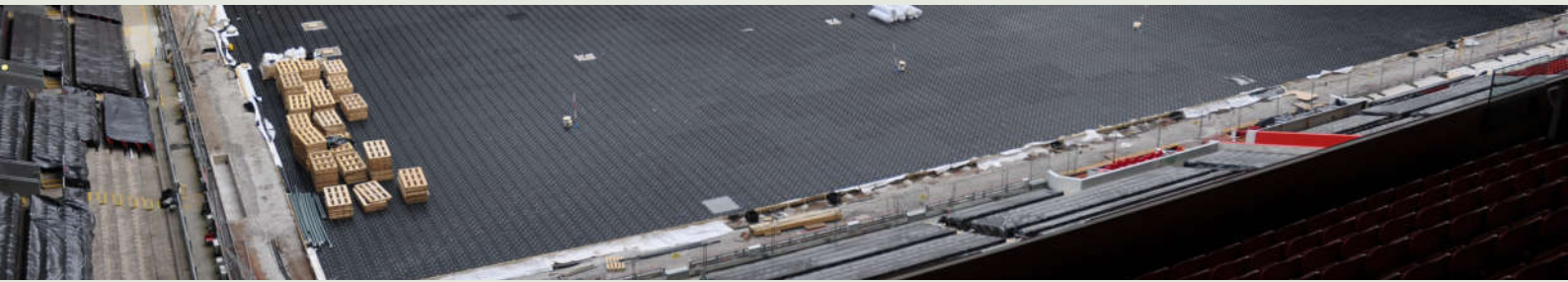


## Future Youth Zone, Dagenham



SELSports installed a ground level 3G pitch on a prepared formation within a 6 week contract period including fencing & floodlighting.





SELSports Division, Canal House, Bonsall Street, Blackburn, BB2 4DD.  
T: 01254 589987 E: [info@selenvironmental.com](mailto:info@selenvironmental.com)